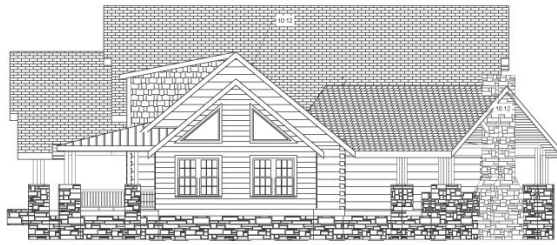


FIRST FLOOR PLAN

This drawing is not to be used for construction without the written permission of Honest Abe Log Homes, Inc. © 2012 Honest Abe Log Homes, Inc.



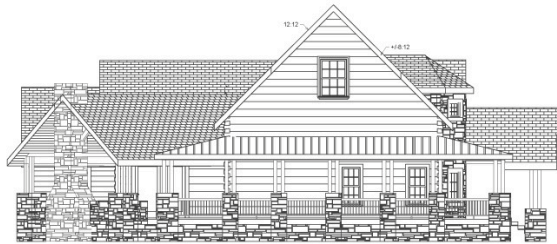
FRONT ELEVATION



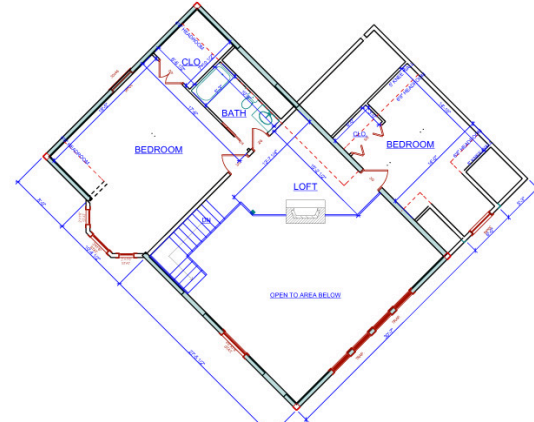
RIGHT ELEVATION



LEFT ELEVATION



REAR ELEVATION



SECOND FLOOR PLAN

This drawing is not to be used for construction without the written permission of Honest Abe Log Homes, Inc. © 2012 Honest Abe Log Homes, Inc.



© 2012 Honest Abe Log Homes, Inc. All rights for the design shown in this drawing are reserved by Honest Abe Log Homes, Inc. The design on this drawing is for a structure manufactured by Honest Abe Log Homes, Inc. and is not to be used by any other log home manufacturer, log home builder or general builder of any kind in the construction of same structure, without the written permission of Honest Abe Log Homes, Inc.

These Log Package Blueprints are drawn specifically for the design and manufacturing of the log home package for the buyer named in the titleblock. They represent only the log package requirements, and are not intended for the buyer's overall project and site conditions. The materials that are required in the log home package shown in these plans meet the allowable stresses found in the 2009 National Design Specifications for Wood Construction (NDS) and the stress and the grade requirements of Timber Products Inspection Inc. (TPI), of Conyers, GA. The buyer is responsible for compliance with all local building inspector regulations and permits. The buyer is responsible for notifying Honest Abe Log Homes of any local code loads that are different from the 2009 NDS standard design loads.

REVISIONS:		
REV. #	DATE	REV. BY

THIS RESIDENCE WAS DESIGNED FOR:  
**CROSSVILLE MODEL**

TITLE: PREVIEW  
DATE: 01/17/13  
SCALE: 1/4" = 1'-0"

DRAWN BY: MPH  
CHECKED BY:

SHEET NO. 10