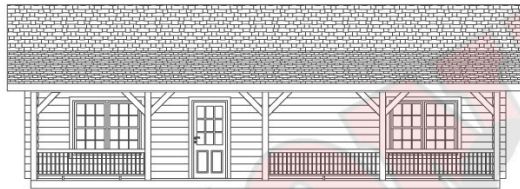


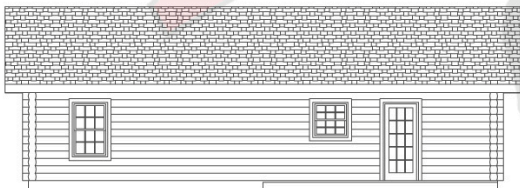
**FIRST FLOOR PLAN**



**FRONT ELEVATION**



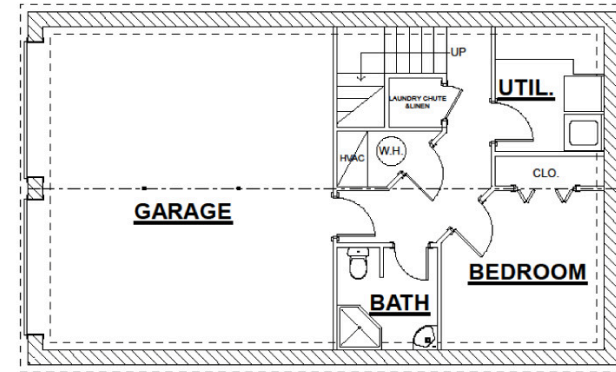
**RIGHT ELEVATION**



**REAR ELEVATION**



**LEFT ELEVATION**



**OPTIONAL BASEMENT PLAN**

**PREVIEW SET**  
**NOT FOR CONSTRUCTION**



© 2008 Honest Abe Log Homes, Inc. All rights for the design shown on this drawing are reserved by Honest Abe Log Homes, Inc. The design on this drawing is for a structure manufactured by Honest Abe Log Homes, Inc. and is not to be used by any other log home manufacturer, log home builder or general builder of any kind in the construction of same structure, without the written permission of Honest Abe Log Homes, Inc.

These Log Package Blueprints are drawn specifically for the design and manufacturing of the log home package for the buyer named in the title block. They represent only the log package requirements, and are not intended for the buyer's overall project and details. The materials that are supplied in the log home package shown in these plans meet the allowable stresses found in the 2005 National Design Specifications for Wood Construction (NDS) and the stress and fire grade requirements of Timber Products Inspection, Inc. (TPI), of Conyers, Ga. The buyer is responsible for compliance with all local building inspector regulations that are necessary in obtaining any permits. The buyer is responsible for notifying Honest Abe Log Homes of any local codes that are different from the NDS standard design loads.

REVISIONS:

REV. #	DATE	REV. BY

THIS RESIDENCE WAS DESIGNED FOR: **CREEKSIDE**

TITLE: **PREVIEW SET**

DATE: 09-27-08	DRAWN BY: MFR	SHEET NO.:
SCALE: N/A	CHECKED BY:	